



Interreg



Co-funded by
the European Union

North-West Europe

Thematic networking session
“Creating lasting change”
Developing resilient
and smart cities

Luxembourg, 16 December 2025

Irma Botic
Valentine Labouheure

Agenda

1. Session objective
2. Theme overview
3. SHICC project experience
4. Networking tables



Objective

- **Bring together stakeholders** tackling resilient and smart cities
 - Get inspired by **best practices** to make project impact durable
 - Discuss how to **turn project outputs into lasting results** and explore opportunities on how to make this happen
 - Identify **support needs** to sustain innovations beyond project lifetimes
-

Creating lasting change



Create **lasting territorial change**, not just short-term project results



Embed project results into **regional / local policies and community practices**



Ensure that **public investments continue delivering value** after projects end

Creating lasting change



Build on your project's achievements and **ensure the transfer of successful initiatives**



Strengthen **connections with other projects**, create synergies and opportunities for **shared learning and collaboration**



Scale up and broaden the reach of **effective practices** across multiple regions and sectors

Supporting NWE projects in taking results a step further

Telling the story

Provide tools and visibility for projects to showcase and replicate their outputs

Building on success

Support the **uptake of successful project outputs** beyond what was initially planned

Creating connections

Facilitate knowledge exchange and networking among partners and projects, within NWE and beyond

Supporting NWE projects in taking results a step further

Telling the story

Provide tools and visibility for projects to showcase and replicate their results

Promote project activities and **events**

Build project capacity to communicate and showcase their results through **training and workshops**

Showcase NWE projects at **Programme events**

Push NWE projects visibility and / or facilitate participation to **awards and EU external events**

Supporting NWE projects in taking results a step further

Building on success

Support the **uptake of successful project outputs** beyond what was initially planned

Support the uptake of project outputs towards new territories, new type of stakeholders, new fields or domains, notably with **NWE capitalisation calls**:

- **Call 1:** open now until 28 May 2026
- **Call 2:** opening in Dec 2026 until May 2027

Reach out to your Contact Point for support:
www.nweurope.eu/contact-points

Supporting NWE projects in taking results a step further

Creating connections

Facilitate knowledge exchange and networking among partners and projects, within NWE and beyond

Support project **networking**, partnerships, clustering and synergies **within NWE and beyond** and **across programming periods**, notably with networking / clustering events

Why is this topic a challenge for NWE?

- Cities face **extreme weather, pollution, and biodiversity loss**—threatening infrastructure, health, and livability.
 - **Energy poverty and exclusion** in deprived neighborhoods risk deepening inequalities.
 - Diverse policies and governance structures require **unified strategies** for shared challenges.
 - **Green infrastructure and smart tech gaps** slow cities progress.
 - Cities are **engines of growth and innovation**—their resilience shapes regional stability and quality of life.
-

What do we expect?

- **Stronger urban resilience** to extreme weather, reduced emissions, and **sustainable water/energy management**.
 - **Accessible housing, energy, and services** for all, reducing poverty and exclusion.
 - **Cross-border collaboration**, digital integration, and **citizen engagement** in decision-making.
 - **Zero-waste systems, renewable energy, and green infrastructure** to boost sustainability.
 - **Healthier, safer, and more attractive cities**—balancing growth, resilience, and well-being.
-

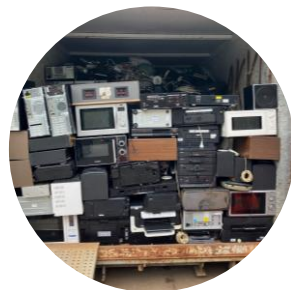
20+ projects

Developing resilient and smart cities

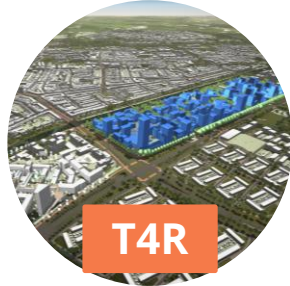


20+ projects

Developing resilient and smart cities



Current NWE projects looking at → territorial planning



≈25.7 M TEC

Current NWE projects looking at → climate adaptataion



Cool Neighbourhoods



GreenDense



IB-Green



≈22.2 M TEC

Current NWE projects looking at → building transformation



Circular Building Convert



Upcycling Trust



CIRCULAR RENO

≈23.7 M TEC

Current NWE projects looking at → waste



≈15 M TEC

Current NWE projects looking at → agro-food systems



CUF training



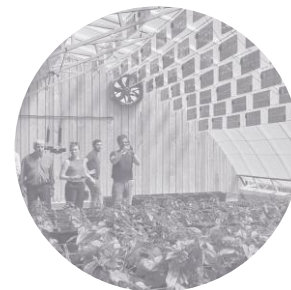
Current NWE projects looking at → energy efficiency & mitigation

Interreg



Co-funded by
the European Union

North-West Europe



ACCU



SmartCORE



E2-CUTIES



AquaCOM



RODEO



SCEPA



STEER-NWE



GEMS

Jean-Baptiste Debrandt

City of Lille

Lead partner of the SHICC project (2017-2021)

Context

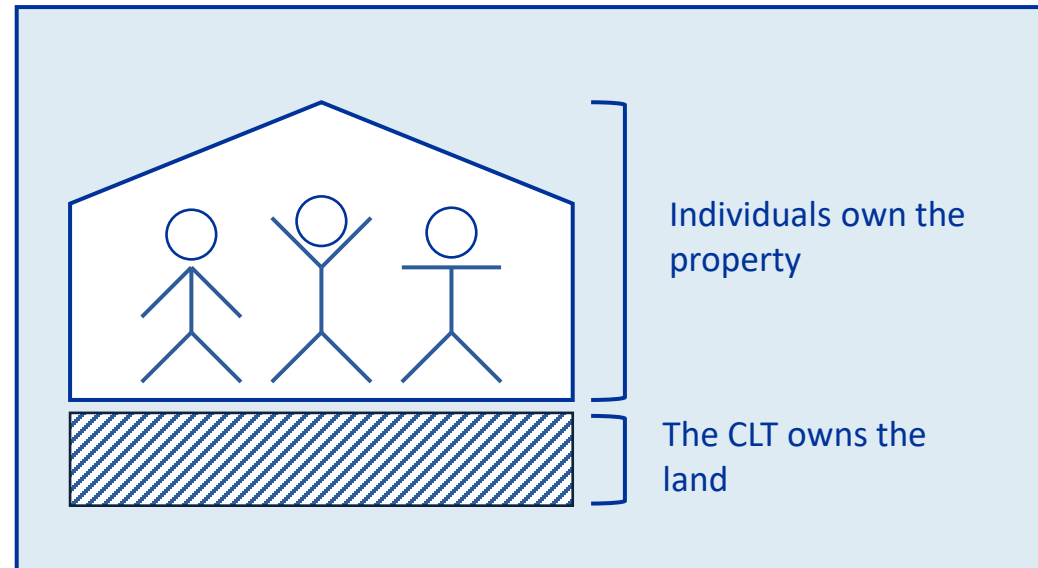
What challenge did SHICC address?

We have aimed to create favourable conditions for the establishment and growth of **Community Land Trusts (CLTs)** and equivalent organisations across many cities in NWE.

CLTs are non-profit and often community-led organisations. In Europe, they are creating quality homes that are **permanently affordable**.

The CLT-model is a powerful answer to the housing affordability crisis currently affecting so many European cities.

How does it work?



- An agreement is signed with the CLT. Home buyers own the building, while the land is owned by the CLT.
- Owners are expected to use their property as their main residence. They pay a modest contribution to the CLT for renting the land.
- The value of the property is not influenced by market fluctuations.

What were your main outputs and results?

- Our “Start Up Fund” scheme benefitted at least 15 groups to **establish and/or reinforce** CLTs.
 - In Lille, Brussels, Gent and London, CLTs have already delivered 400+ affordable homes. **Hundreds more** are under construction or being planned by 2030.
 - The project generated a spark for the creation of two **CLT networks**, one national (the FSF, in France) and one European-wide (the European CLT Network).
 - The success of CLTs and OFSs contributes to raising the awareness of authorities and the general public about the model. Ten years ago, we often heard the question “What’s a CLT?”. Today, we often hear the question “**How’s your CLT?**”.
-

Successful initiatives

What initiatives did you implement, both during and after the project, to ensure the result durability?

Production of numerous tools, papers and guides, to help others establish a CLT in their city and implement operations. Those documents **remain available** in SHICC's website.

Continuous efforts in ensuring that households eligible to own a CLT property can **benefit from advantageous conditions** (e.g. reduced VAT, simplified administrative procedures, access to 0 interest loan schemes) to do so.



QR-Code to SHICC's documents repository

Successful initiatives



Meeting of the European CLT Network in Amsterdam in June 2022. *Credit: ECLTN*



Visit by CLTs from Belgium and the Netherlands to a site in Brussels. *Credit: CLTB*

Successful initiatives



In Lille, the operation “Cosmopole” was finalised in 2020. *Credit: La Voix du Nord*



In Lille, the renovation of the Cité St.Maurice began in 2017. *Credit: Daniel Rapaich*



In Brussels, the operation “Vandenpeereboom – Arc-en-Ciel”, finalised in 2018. *Credit: CLTB*

Challenges...

What barriers and challenges did you encounter in sustaining your project impact? What additional support would you have needed?

SHICC helped many CLTs gain momentum and credibility among decisionmakers. However, one of the main challenges affecting CLTs still remains: **Securing funding**.

Granting CLTs access to specific lines of credit would facilitate the implementation of new operations, therefore **increasing the output** of much needed affordable homes.

...and perspectives

Has the project inspired new ideas ?

Many partners and beneficiaries remained in closed contact after the end of the project and despite Brexit.

From their interactions and exchanges, came about the idea of another CLT-related project, **Interreg NWE Upcycling Trust**.

Through it, we are enabling modest households to implement energy renovations while integrating their homes to CLTs.



Project partners of **Interreg NWE SHICC**



Project partners of **Interreg NWE Upcycling Trust**



Q&A

Networking tables



1. Tour de table

Share your plans to ensure durability and uptake of outputs



2. Discuss the key question

What further initiative(s) – at programme or project level – could support the durability of results?



3. Restitution

One participant from each table shares the takeaway messages from their group

Tour de table

Interreg



Co-funded by
the European Union

North-West Europe

**What are your current plans
to ensure durability and
further uptake of outputs?**


Key question

Interreg



Co-funded by
the European Union

North-West Europe

A group of four people (three men and one woman) are in a meeting room with large windows overlooking a city. One man is standing and pointing at a board of colorful sticky notes. The other three people are seated and looking at him. A white rounded rectangle is overlaid on the bottom half of the image, containing the key question.

What further initiative(s) – at programme or project level – could be taken to support the durability of results?

What's next?

Interreg



Co-funded by
the European Union

North-West Europe

13:00 – 14:15

Foyer 1 - Level 0

NETWORKING LUNCH

14:15 – 16:15

NWE PROJECTS MAKING A DIFFERENCE

Track 1. Green transport and connectivity

Track 2. Circular and resource-efficient economy

Track 3. Climate-friendly and resilient regions

Track 4. Community-led energy transitions

Track 5. Resource-efficient local and regional planning

Track 6. Sustainable agriculture and water systems



**Social media
challenge**




**Vote for the most
inspiring story**

**Check your
personalised agenda
on the event app!**



NWE projects making a difference

	Workshop +1 Level +1	Delegates 3 Level -3	Banquet Level +1	Delegates 2 Level -3	Delegates 1 Level -3	Workshop 0 Level 0
	Green transport and connectivity	Circular and resource-efficient economy	Climate-friendly and resilient regions	Community-led energy transitions	Resource-efficient local and regional planning	Sustainable agriculture and water systems
14:15 – 14:35	Green SKHy	CASCADE	Cool Neighbourhoods	ACCU	ASSET	Better-Calf
10' break						
14:45 – 15:05	MONA	Hemp4Circularity	IB-Green	CIRCUS	Circular Building Convert	SIMONE
10' break						
15:15 – 15:35	STEER-NWE	E6	ECOBoost	RODEO	Circular Shift	Rural Roadwater Rescue
10' break						
15:45 – 16:05	WISTAR	PREUSE	PolliConnect	SmartCORE	T4R	ResiRiver

Interreg



Co-funded by
the European Union

North-West Europe

Interreg



**Co-funded by
the European Union**

North-West Europe

Thank you
